

Study of Inhibitory Control

Does your child have:

1. **Chronic Tic Disorder or Tourette Syndrome,**
2. **Autism Spectrum Disorder**
3. **Trichotillomania, or**
4. None of the above?

Would he/she be willing to do a computer task as part of a research study?

The study involves 2 parts:

1. Brief phone screener (parent)
2. 2-3 hour lab experiment (child and parent)

Participants will be financially compensated (\$50) for their time.



Please read further for eligibility criteria and study information.

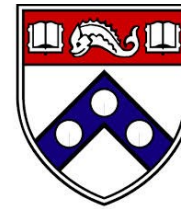


Children's Hospital of Philadelphia
Center for Autism Research &
Pediatric Neuropsychiatry

in collaboration with



Univ. of Delaware
Psychology Dept.



Univ. of Pennsylvania
Psychiatry Dept.

Research Study



Control of Repetitive Behaviors



For more information about the study, or if you think you are eligible, please contact:

Kathryn Roberts

Email:
RobertsK2@email.chop.edu

RESEARCH STUDY INFORMATION

Although behavioral presentations differ, Tic Disorder, Autism, and Trichotillomania each involve repetitive behaviors that appear to reflect difficulties with inhibition. The purpose of this study is to understand how repetitive behaviors are controlled in each disorder and to gain insight into the relationships among disorders.

Eligibility

Your child must:

1. Be 8-17 years old.
2. Have a diagnosis of only one:
 1. Chronic Tic Disorder,
 2. Autism Spectrum Disorder
 3. Trichotillomania, *or*
 4. None of the above

Your child must not:

1. Take neuroleptic medication.
2. Have mental retardation, genetic conditions, or seizure disorders.
3. Have a psychotic condition.

Part 1: Phone Screener

A researcher will conduct a brief phone screener with a parent in order to:

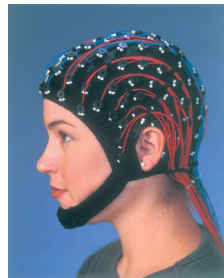
1. Explain the research study
2. Obtain permission to, and collect, basic information about the child to determine if he/she is eligible to participate

Part 2: Lab Experiment

Eligible children will be asked to complete a single 2- 3 hour session at:

Center for Autism Research
3535 Market Street
Philadelphia, PA 19104

During this session, the child will complete two simple computer tasks while their brain activity are being recorded using non-invasive electroencephalography (EEG) techniques. EEG involves the child wearing a cap with gel in the cap's sensors.



Child Tasks (during EEG):

1. Distinguish between similar-looking letters and press one of two buttons to indicate the targeted letter.
2. Distinguish between left- and right-facing arrows by pressing one of two buttons. To gain a sense of the individual's ability to inhibit motoric actions, stop signals appear after some arrows to indicate that the child should refrain from responding.

Parent Tasks:

As the child completes these two tasks, parents will be asked to complete questionnaires regarding the child's inhibitory control and repetitive behavior.

For more information about the study, or if you think you are eligible, please contact:

Kathryn Roberts
Email: RobertsK2@email.chop.edu